



GMT MONTHLY MEMBERSHIP PROGRESS REPORT

Results as of: 6/30/2018

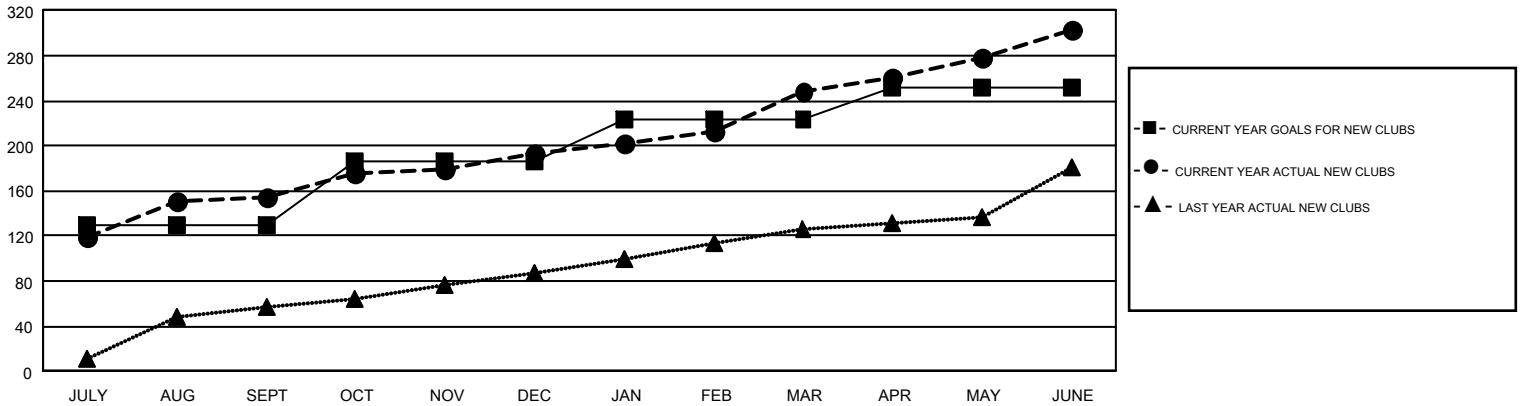
GMT Constitutional Area 6, Group A

GMT: SWADESH RANJAN SAHA

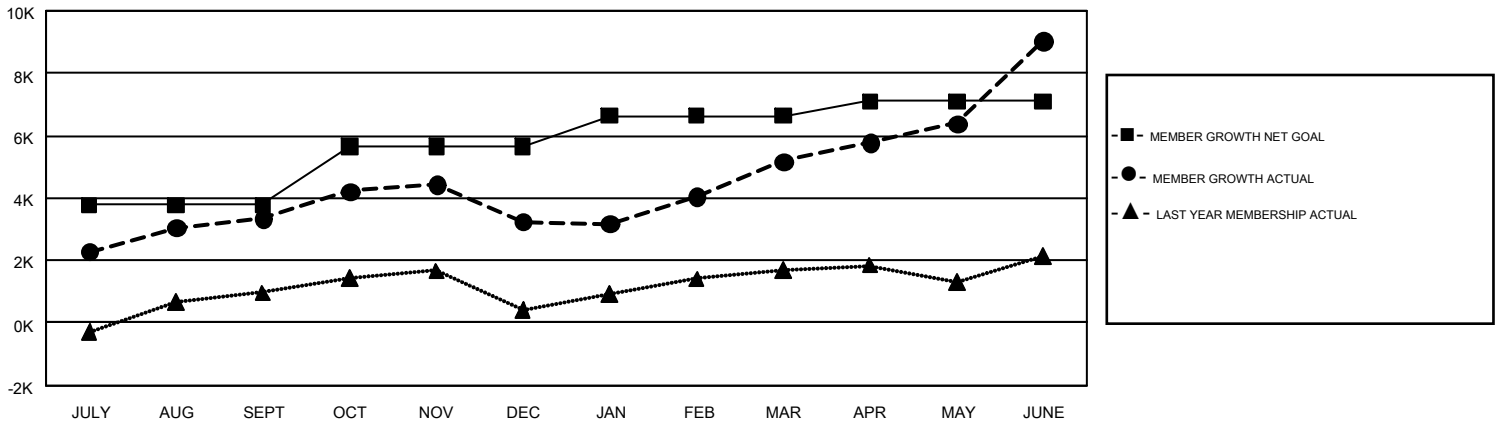
REPORT DOES NOT INCLUDE CLUBS IN UNDISTRICTED AREAS.

Clubs				Members			
RESULTS FOR 2017-2018				RESULTS FOR 2017-2018			
QUARTER	NEW CLUB GOAL	NEW CLUBS	DROPPED CLUBS	QUARTER	MEMBER GROWTH NET GOAL	MEMBER GROWTH ACTUAL	DROPPED MEMBERS ACTUAL (including transfers)
JULY/AUG/SEPT	130	155	7	JULY/AUG/SEPT	3,782	4,994	1,520
OCT/NOV/DEC	57	38	67	OCT/NOV/DEC	1,885	2,085	2,117
JAN/FEB/MAR	37	56	12	JAN/FEB/MAR	974	4,218	1,256
APR/MAY/JUNE	27	54	45	APR/MAY/JUNE	457	9,275	4,973

GOALS AND ACTUAL NEW CLUBS CUMULATIVE



GOALS AND ACTUAL MEMBERS CUMULATIVE



DROPPED CLUBS: 131	1,279 CLUBS OF 1,750 ADDED 1 OR MORE NEW MEMBERS	GENDER DISTRIBUTION MALE 42,225 (73.44%) FEMALE 15,274 (26.56%)
DROPPED MEMBERS DECEASED 135 CLUB CANCELLED 2,582 OTHER 7,146 TOTAL 9,863	CLICK HERE FOR CUMULATIVE MEMBERSHIP DATA	TOTAL FAMILY UNIT MEMBERS 0 FAMILY MEMBERS PAYING HALF DUES 0